

EVENT GUIDE

Finsbury Park

5k, 10k, Half Marathon & Juniors
Sunday 16th June 2024



Your Race Experience

P3

Welcome



P4

Arrival



P5

Race Pack Collection



P7

Bag Drop & Toilets



P8

Warm Up & Race Start



P8

During the Race



P10

The Course



P12

Finish Goodies



P15

Juniors



P16

Run For Charity



P18

Results & Photos



P19

RTKit



P20

Get Involved



Welcome

The entire RunThrough Team is happy to extend a warm welcome to you, joining us for your upcoming race.

Our goal is simple: to inspire an active nation through running, through the provision of inclusive and welcoming events for everyone. Our collective passion for running and community has led us to create events that we hope will be memorable experiences for all participants.

Our team is a diverse blend of running enthusiasts and seasoned event organisers. Collectively, we've participated in countless races, which has not only honed our event organising skills but also deepened our understanding of the journeys of all runners.

So, rest assured, whether you're chasing a PB or aiming to complete your first race, you're among friends who understand the exhilarating highs of completing an event.

As race day approaches, know that your safety is our top priority. Our team (pictured) will be on the ground doing everything possible to ensure you have the best experience at this RunThrough event.

We look forward to seeing you on race day, don't hesitate to say hello!

Wishing you the best on race day!

The RunThrough Team

ABBY



JESS



JOE



CAOLAN



TRAVEL

Address: Finsbury Park, London, N4 1EE

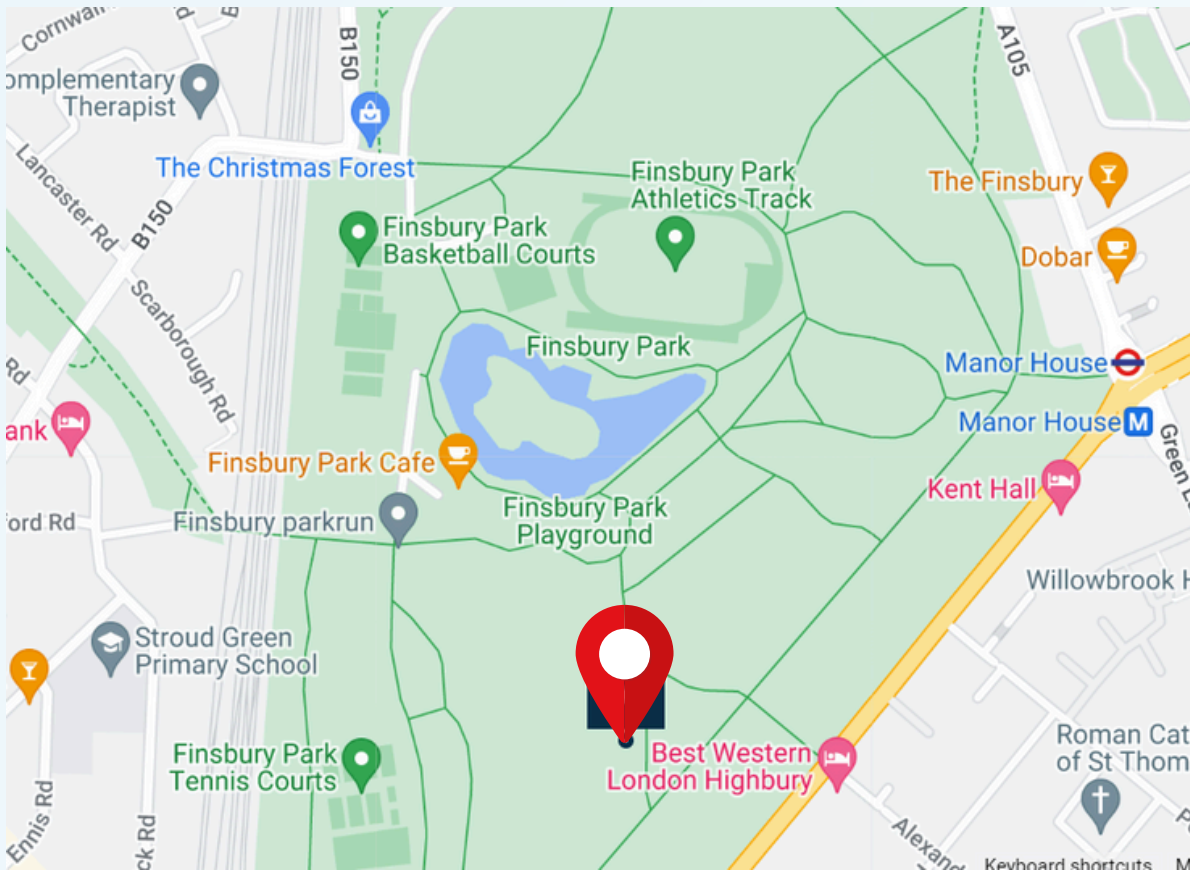
Nearest underground stations: Manor House and Finsbury Park

Nearest rail station: Finsbury Park

The park is easily accessible by both foot and cycle. Cycle parking is available in the park.

There is no venue specific parking, please use [Parkopedia.com](https://www.parkopedia.com) to find local alternatives.

On arrival, you will find the event village in the south of the park, pinned below.



what3words

If using the app What3Words, use the words [///eagle.lame.broken](https://www.what3words.com/#!/eagle.lame.broken) for exact event village location

[Use Transport for London to plan your route HERE](#)

Race Pack Collection

Race Pack Collection Times:

Half Marathon: 8:00-9:00am
10k: 8:30-9:30am
5k: 8:30-9:30am
Juniors: 10:00-11:00am

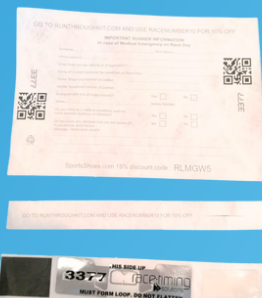
Start Times:

Half Marathon: 9:30am
10k: 10:00am
5K: 10:00am
Juniors: 11:30am

733

- On arrival make your way down to the registration desks.
- Your number will be assigned on the day.
- Attach your number to the front of your shirt (we recommend safety pins or magnets).
- Your timing chip will be attached to the bottom of your race bib, tear this off and slot into your shoe laces.

[CLICK FOR ENTRY LIST](#)



Included:

Bib number

Baggage Label

Timing Chip



Please take a couple of minutes to fill out the brief runner information form below and on the back of your bib. This will help us in case of an emergency!

[CLICK FOR FORM](#)



Step 1



Step 2



Step 3



Step 4





**FEEL-GOOD
MILES**

*in the
GHOST 16*

BROOKS

Shop the new Ghost 16

SPECTATORS

COFFEE

There will be coffee and food vans located in the event village serving snacks and hot drinks.



TOILETS

There will be portable toilets available within the event village, as well as public toilets by the cafe.

If you live locally we recommend using toilets at home.

BAGGAGE

- Please limit the number of belongings you bring to the event.
- There will be an informal bag drop in the event village for those who need it.
- Your baggage tag is attached to your race number.
- Tear it off and attach to your bag.
- Leave your bag in our bag drop marquee.
- Collect your bag after your race.

RUNNER RETREATS



RETREATS | CAMPS | WORKSHOPS

FOR RUNNERS OF
ALL ABILITIES

FOUNDED BY



FIND OUT MORE



WARM UP & RACE START

We will have a warm up in the event village 15 minutes prior to the start of each race.

From here, we will call out estimated finish times to get all runners lined up on the track and ready to run.

The 10k & 5k will start together.



DURING THE RACE

We will have marshals all around the course as well as distance signs and arrows. These will be black mile markers for the Half Marathon, green KM markers for the 10k and red KM markers for the 5k.

Please keep count of your laps during the race. The course is on the paths in the park:

Half Marathon - 8 laps + Half lap to start

10k - 4 laps

5k - 2 laps

Please be aware of pedestrians, cyclists and dogs using the park footpaths.

We have marshals around the course and signs but this is not a road race, you have to pay very close attention to where you are going.

Due to the nature of a lapped course we ask that you remain vigilant to other runners. This will allow for anyone needing to overtake to have a clear path through and ensure not only your safety but allow you the best experience throughout the race.

Please also be aware that we will have a safety bike ahead of the lead runner of each distance to prevent any collision around the laps. They will be vocal when coming towards you from behind so be sure to listen out for any additional instructions.

Please drain and discard all litter and emptied bottles within the signed litter zone. There will be large bags and bins within this area that you will pass on each lap of your race.

GET RACE READY

15% OFF

at

SPORTSSHOES.COM

Use code:

E64BK29K

The UK'S NO.1 Online Retailer for RUN.GYM.HIKE

#NoFunStandingStill

Terms & Conditions apply. See website for details.

15%OFF Spring/Summer 24 ranges at Sportsshoes.com*

Code valid until 16.06.24

*Exclusions apply

COURSE MAP



[CLICK FOR JUNIORS INTERACTIVE MAP](#)

[CLICK FOR 5K INTERACTIVE MAP](#)

[CLICK FOR 10K INTERACTIVE MAP](#)

[CLICK FOR HALF MARATHON INTERACTIVE MAP](#)

⁺nuun

HYDRATION

Hydration starts here

NEW!



SPORT



Fuel your work out with electrolytes. Before, during and after exercise.



ULTRA



Don't let dehydration slow you down. Optimized electrolyte and Carbohydrate formula.

Nuun is here to support every RunThrough runner.

Good Luck to all the runners!

@nuunhydrationuk

#nuunuk

#nuuniverse

#nuunhydration

Carbohydrate-electrolyte solutions enhance the absorption of water during physical exercise.



THE FINISH LINE

Please continue walking through the finish funnel to collect your medal and all your post race goodies!

These will consist of a bottle of water and snacks from our sponsors.

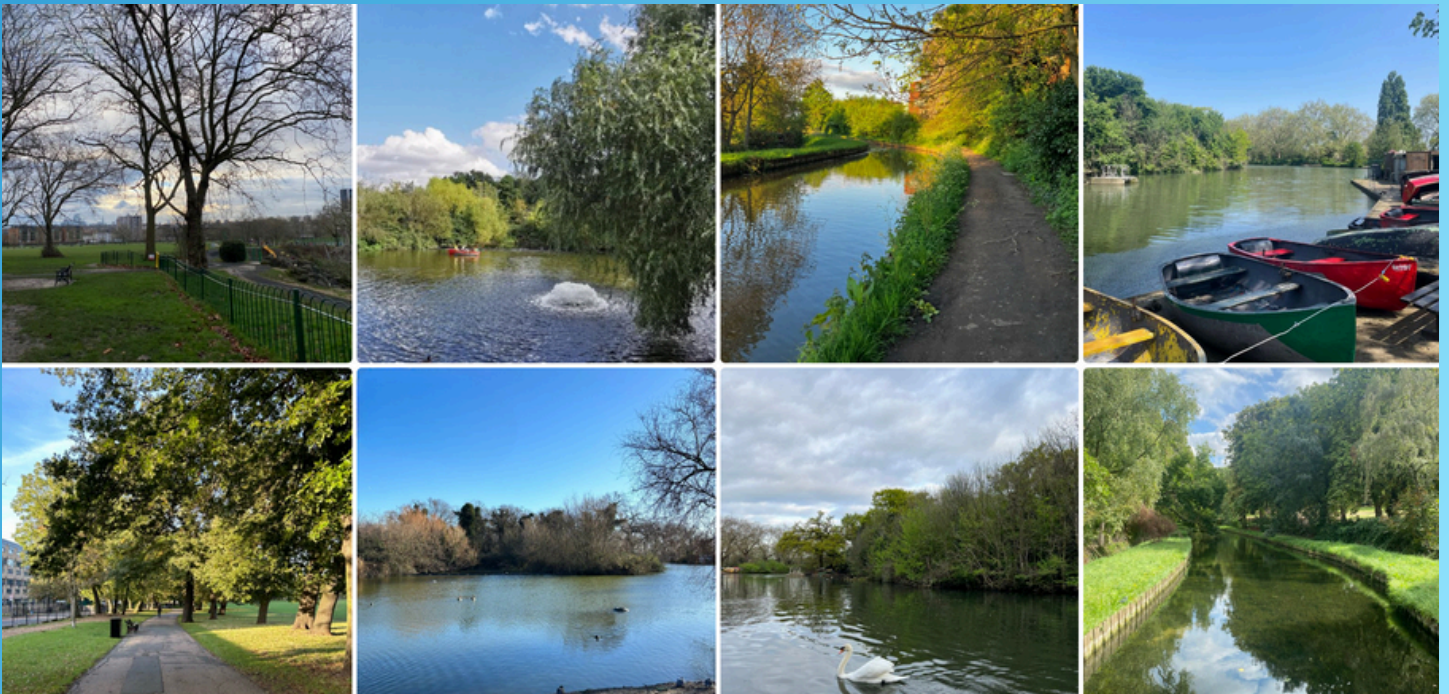


REFRESHMENTS

There will be a water station on each lap of the course.

There will also be a bottle of water waiting for you at the finish line.

We recommend bringing your own drinks to stay hydrated in the lead up to the event.



CRUNCHY CORN "OFF THE COB"

♥ **50% LESS FAT***

**in comparison to potato crisps*

♥ **HIGH FIBRE**

♥ **LOW SUGAR**

♥ **GLUTEN FREE**

FUEL YOUR RUN

PERFECT CRUNCH

GREAT FLAVOUR

SIMPLE
INGREDIENTS




TRY OUR FLAVOURS



PLAY CORN HOLE, WIN PRIZES!

Get CORN-petitive with our corn hole game in the event village! Make sure you record your score by scanning the QR code at events to be in with a chance of winning race entries, LOVE CORN merch and more!



20% OFF
your next order 

USE CODE:
RUNTHROUGH20
amazon.com/lovecorn



WIN A 5 YEARS SUPPLY OF BROOKS SHOES!

Scan the QR code to take part in the Brooks Run Quiz for a chance to win a 5 years supply of Brooks running shoes! A winner will be chosen at the end of the year, so get those thinking caps on.

T&Cs apply

BROOKS



*Scan or click
the QR Code*



JUNIOR RACE!



- Collect your race pack from registration. This will include your race number, timing chip, and a wristband. The wristband is to be worn by the parent/guardian throughout the event.
- Meet by the big blue flag in the event village 15mins prior to the start time.
- We'll have a group warm up at 11.20 and walk to the start together.
- The race will start at 11.30 and will follow a 1.6km loop consisting of 1 lap of the park. There will be a lead bike and marshals along the course.
- The junior race will finish at our main finish line, from here you will have your own junior finish funnel to collect your goodies.
- Parents/Guardians, you are welcome to join in or you can cheer can on your little ones on the finish line.
- **Your little ones will not be able to leave the junior finish funnel until they are accompanied by their appropriate wristbanded adult. Please ensure your wristband is visible on collection. We will have a staff member in this area at all times.**
- When in doubt, keep an eye out for our big blue flag!





gofundme™

Make your place count!

***It's never too late to start fundraising
for a charity of your choice!***

**Create your GoFundMe fundraising page today
to raise money whilst going that extra mile.
Successful fundraising is at your fingertips.**

**Share updates, thank donors, and get
automatic transfers to your charity with
GoFundMe's powerful fundraising tools.**

Start a GoFundMe

RUNTHROUGH TRAINING PLANS

POWERED BY



REAL COACHES FOR
REAL RUNNERS.
OUR TEAM OF EXPERT
COACHES PROVIDE

✓ STRUCTURE

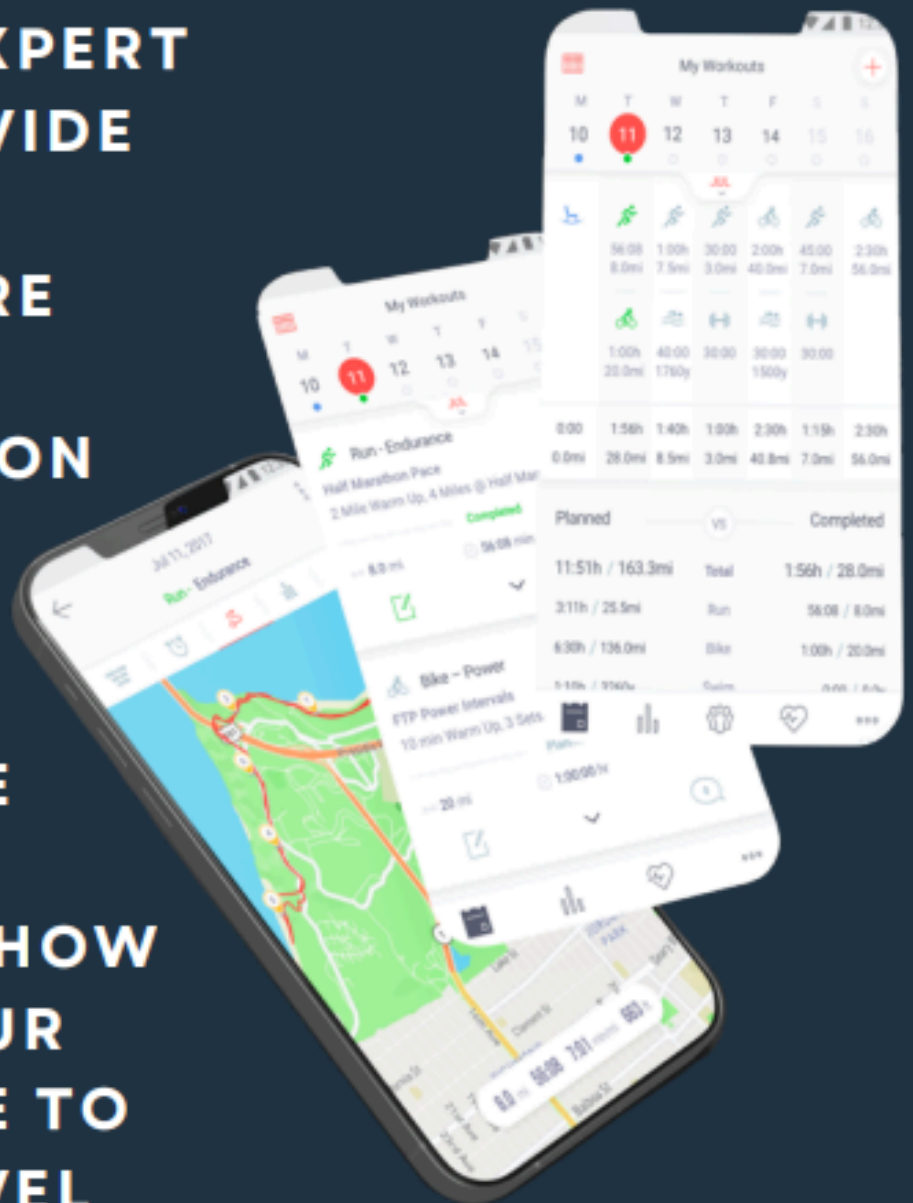
✓ INSPIRATION

✓ SUPPORT

✓ GUIDANCE

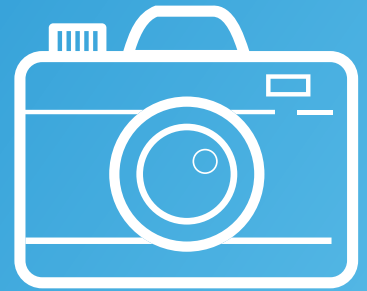
SO YOU KNOW HOW
TO TAKE YOUR
PERFORMANCE TO
THE NEXT LEVEL

START TRAINING TODAY



PICTURES

We will have a photographer taking a few snaps of the race, which will be made available on our photos page after the race.



click the camera to visit the page!



SOCIAL MEDIA

Please check out our X account @runthroughuk and use the hashtag #Runthroughuk in the build-up to the race.



If you want to talk all things running before and after the event join our RunThrough South Facebook Page.



To listen to all things running, RunThrough and inspiring stories, check out the Gone Running Podcast!



If you #RunThroughSouth on Instagram with your race day collages, the best ones will feature on our page!

click the icons to visit our pages!



Cheer on your friends, celebrate your achievements and share your story with us! We love to hear from you!

Click the QR to fill out the form with your event day shoutout requests!



**RESULTS AVAILABLE AT
WWW.RESULTS.RUNTHROUGH.CO.UK**



Any pre-ordered kit can be collected at the RTKit stall, please have your order confirmation ready to show our team.

Check out the RTKit Stall located in the event village.

www.RunThroughKit.com

GET INVOLVED!

Here at RunThrough we are always looking for likeminded people to join our community.

PACERS & FINISH LINE FRIENDS

- FREE RACE ENTRY
- £10 RTKIT VOUCHER

VOLUNTEERS

- £10 RTKIT VOUCHER
- £65 RACE CREDIT



WWW.RUNTHROUGH.CO.UK/VOLUNTEER

F.A.QS

How will my results show?

Results will be listed in Gun Time order (time from the start of the race, to you finishing). You will also be able to see your Chip time (the exact time from when you cross the start line to your finish). The difference between times may be due to it taking a few minutes to get everyone over the start line.

Your category is determined on your age, anyone under 35 is classed as a senior, 35+ will be listed as Vets in 5yr increments. This will further be categorised as Female, or Open (All male, non-binary, or those who prefer not to say).

What is the minimum age for this event?

Kids-any age | 5k-11 | 10k-15 | HM-17

It's optional if parents want to join in the kids race, although highly recommended for anyone under 9. Any supporting adults, don't need to enter the race.

Is there a time restriction to complete the race?

No, everyone is welcome, however please get in contact with us at info@runthrough.co.uk if you plan to take more than 3hrs to complete your race as we may need to make special arrangements around the course and event village.

I can no longer make the event, can I get a refund?

We are sadly unable to refund or transfer your entry within 14 days of the race as your race pack and everything associated with your entry fee including your medal, and post race goodies have already been paid for by this time. We'd love for you to run virtually and we can post out your medal and goodies!

Can I transfer my entry to a friend or swap distances?

We are sadly unable to transfer your entry or edit associated details within 14 days of the race as your race pack and everything associated with your entry have now been processed.

Will there be a water station on the course?

Yes, we will have a bottled water station out on the course for you to help yourself to on each lap. Please empty any bottles before discarding.

Am I allowed to wear headphones?

Headphones are not permitted, unless bone conducting. Should you choose to wear these, we ask you keep the volume low in order to remain aware of your surroundings at all times and can hear any marshal instructions during the race.

When will I get the add on RTKit I ordered with my entry?

This will be available to collect at the RTKit Stall on the day. Please have your email confirmation ready to show to our staff.

Where should I park for the event?

We highly recommend using public transport where possible as parking on site is limited.

Where is the best place to spectate?

We advise staying within the event village to be sure you catch the finish! You're more than welcome to walk around the park, however if you're following the race route, we ask spectators to be respectful of other runners on the paths.

Will there be a prize giving?

The top 3 male and female participants and 1st in each age group can expect an email reward in the week following the race. There will be no presentation on the day. There will also be prize money (£200- 1st | £150- 2nd | £100- 3rd) sent out, only for those who beat the following times:

5k Men's Sub 14:30, Women's Sub 16:00mins

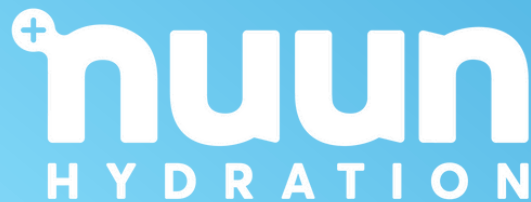
10k Men's Sub 30:30 mins, Women's Sub 34 mins

Half Marathon: Men's Sub 67:30 mins, Women's Sub 73 mins

Check out our podium and photo wall to get your celebratory pictures!



**Supported
by...**



SPORTSSHOES.COM

Interested in supporting an event? email: sam.williams@runthrough.co.uk